

ALBERTA NAWMP PARTNERSHIP 2009-2010 PROGRESS REVIEW

April 2009 to March 2010

*North American Waterfowl
Management Plan*



Alberta
NAWMP
Partnership

Contents

PREFACE	3
NAWMP IN ALBERTA	4
PARTNERSHIP SYNERGY	5
Alberta NAWMP Partnership Structure	6
Alberta NAWMP Partnership Committees, 2009-10	6
A RANGELAND LEGACY	7
SHARING DATA & EXPERTISE FOR COMMON GOALS	8
VERMILION WATERSHED AT THE LEADING EDGE	9
CREDITS FOR WETLAND CARBON: AN UPDATE	10
LINKING WETLAND BIRD POPULATIONS AND HABITAT	11
COMMITTEE REPORTS, 2009-10	12
Board of Directors	12
Management Committee	12
Science Sub-committee	12
Communications Sub-committee	12
Policy Support Sub-committee	12
CONTRIBUTIONS TO NAWMP IN ALBERTA	13
ACTIVITY EXPENDITURES AND HABITAT ACCOMPLISHMENTS, 2009-10	16
COOPERATORS	17

CITATION:

Alberta NAWMP Partnership. 2010. Alberta NAWMP Partnership 2009-2010 Progress Review: April 2009 to March 2010. Ducks Unlimited Canada, Edmonton, AB. Alberta NAWMP-061. 20 pp.

All photographs in this publication are courtesy of Ducks Unlimited Canada unless otherwise stated.

Copyright © 2010 Alberta NAWMP Partnership
Printed in Canada

Preface

“Alberta NAWMP is purely a go-forward organization.” I stated this recently in a casual conversation, but it’s worth repeating here in that it captures Alberta NAWMP’s past year very succinctly. We continue to work diligently with many partners from all walks of life as we strive for sustainable and responsible management of the landscape within the context of social, economic and environmental realities.

While 2008-09 was marked by *change*, the theme for 2009-10 is better characterized by *strengthening* partnership actions. This was demonstrated on many fronts, ranging from revamping components of the NAWMP Partnership structure and governance to continuing to reach out to new partners on the land.

The result was many “go-forward” examples that are creating opportunities for wetland conservation: sponsoring an innovative municipally-led watershed plan (see *Vermilion Watershed at the Leading Edge*), creating a new tool to support wetland restoration in a market-based system (see *Credits for Wetland Carbon: An Update*), funding top priority waterfowl and waterbird research (see *Linking Wetland Bird Populations and Habitat*), recruiting new wetland-sensitive hydrology tool technology and linking to Alberta’s Land-use Framework (see *Sharing Data & Expertise for Common Goals*).

All of this occurred over and above the ongoing “go-forward” work that is the cornerstone of Alberta NAWMP; a remarkable **34,141 acres** of wetlands and associated uplands were secured and enhanced/restored this past year (see *Habitat Accomplishments* table). Exemplifying this significant body of project-based work by the partners is the spectacular OH Ranch situated in Alberta’s southern foothills and grasslands (see *A Rangeland Legacy*).

In tandem with these diverse actions, our focus on communicating these among the partners has also increased this past year. For instance, a new Alberta NAWMP website was launched (abnawmp.ca), numerous ‘in-house’ presentations were made, planning for a future Wetland Forum was started, and the *Annual Progress Review* was produced.

On behalf of Alberta NAWMP, I thank all the individuals and agencies that helped make this past year a success. I especially want to express how much we value our working relationship with thousands of individual Albertans in delivery of our programs.

I am pleased to present the *Alberta NAWMP Partnership 2009-2010 Progress Review*.

Ron Bjorge
Chair, Board of Directors
Alberta NAWMP Partnership



NAWMP in Alberta

Alberta NAWMP is a valuable component in the overall success of the North American Waterfowl Management Plan (NAWMP), a major partnership between Canada, United States and Mexico for waterfowl and wetland conservation.

NAWMP was established in 1986 during a period of widespread drought, diminishing habitats and declining continental wetland-dependent bird populations. Since then, NAWMP has transformed waterfowl and wetland conservation in North America through a partnership approach. It has mobilized a shift from independent projects based on local priorities to a continental vision with geographic priorities guided by regional and provincial partnerships and implemented through local actions. A key factor in NAWMP's success is the ongoing financial stimulus provided by the U.S. North American Wetlands Conservation Act (NAWCA), which has enabled matching of partner-generated funds for wetland conservation projects that achieve NAWMP goals. A notable, recent change to this U.S. federal Act was an amendment to also allow Canadian funds to be eligible for matching to leverage U.S. federal dollars at a 1:1 ratio.

The Prairie Habitat Joint Venture (PHJV) is the NAWMP regional partnership with responsibility for the prairie pothole region in Canada. Potholes are a type of wetland found nestled in gently rolling to hilly prairie and parkland landscapes. The PHJV region is dotted with numerous pothole wetlands, both large and small, providing excellent habitat for waterfowl and other wetland species – and making this region one of the main geographic priorities for NAWMP.

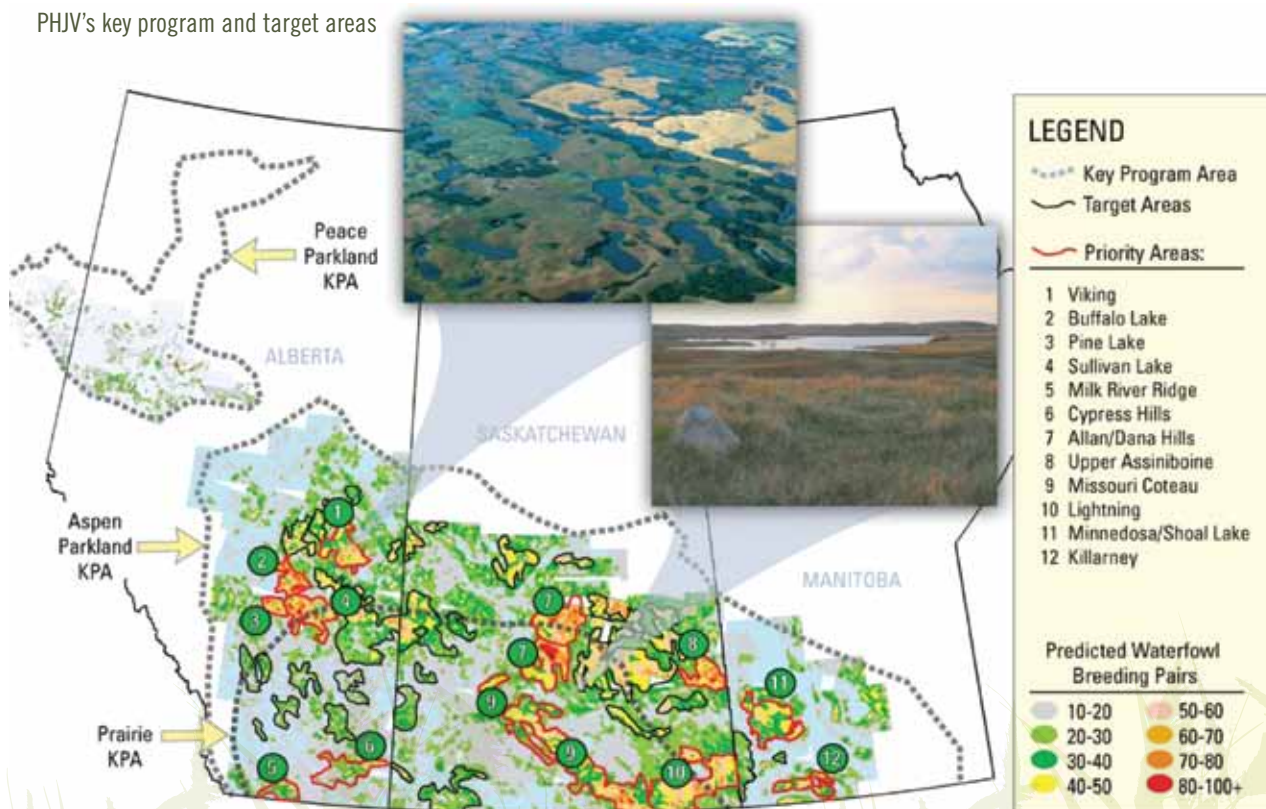
ALBERTA NAWMP (PHJV) VISION

Healthy prairie, parkland and boreal landscapes that support sustainable bird populations and provide ecological and economic benefits to society.

ALBERTA NAWMP (PHJV) MISSION

Provide leadership to achieve healthy and diverse waterfowl and other bird populations through conservation partnerships. These partnerships strive for sustainable and responsible management of the landscape taking into account social, economic and environmental factors.

PHJV's key program and target areas



In support of the PHJV, Alberta NAWMP coordinates a diverse group of federal and provincial government and non-government organizations within Alberta. Alberta NAWMP's direction and guidance are provided by the Alberta NAWMP Implementation Plan (2007-12).

Since the creation of Alberta NAWMP in 1986, the partners have accomplished much together. They have raised the profile of wetland issues in Alberta. They have fostered synergies by coordinating wetland-related programs. They have advanced scientific knowledge to support wetland protection and restoration. They have secured approximately 2.8 million acres in habitat projects. And they have supported mutually beneficial provincial land and water management strategies for healthier landscapes across Alberta.



Partnership Synergy

Alberta NAWMP is comprised of seven government and non-government agencies. These agencies participate in NAWMP to build stewardship networks to help achieve the objectives of both NAWMP and their own agency. In particular, the added energy and resources of the Alberta NAWMP partnership facilitate the following agency objectives and responsibilities:

Agriculture and Agri-Food Canada: to address environmentally responsible food production, which is one of this department's key mandates together with market and innovation components of the new Agricultural Policy Framework *Growing Forward*.

Alberta Agriculture and Rural Development: to facilitate and encourage discovery, dissemination and adoption of agricultural best practices and innovative research that can improve productivity while protecting Alberta's natural environment. Its other major goals include risk management, food safety, and a sustainable rural economy.

Alberta Environment: to encourage Albertans, communities, governments and industry to be good stewards of the environment and implement the provincial water strategy, *Water for Life*. Alberta Environment is also responsible for environmental policies and regulations, risk management, environmental infrastructure, and managing cumulative effects of development on the environment.

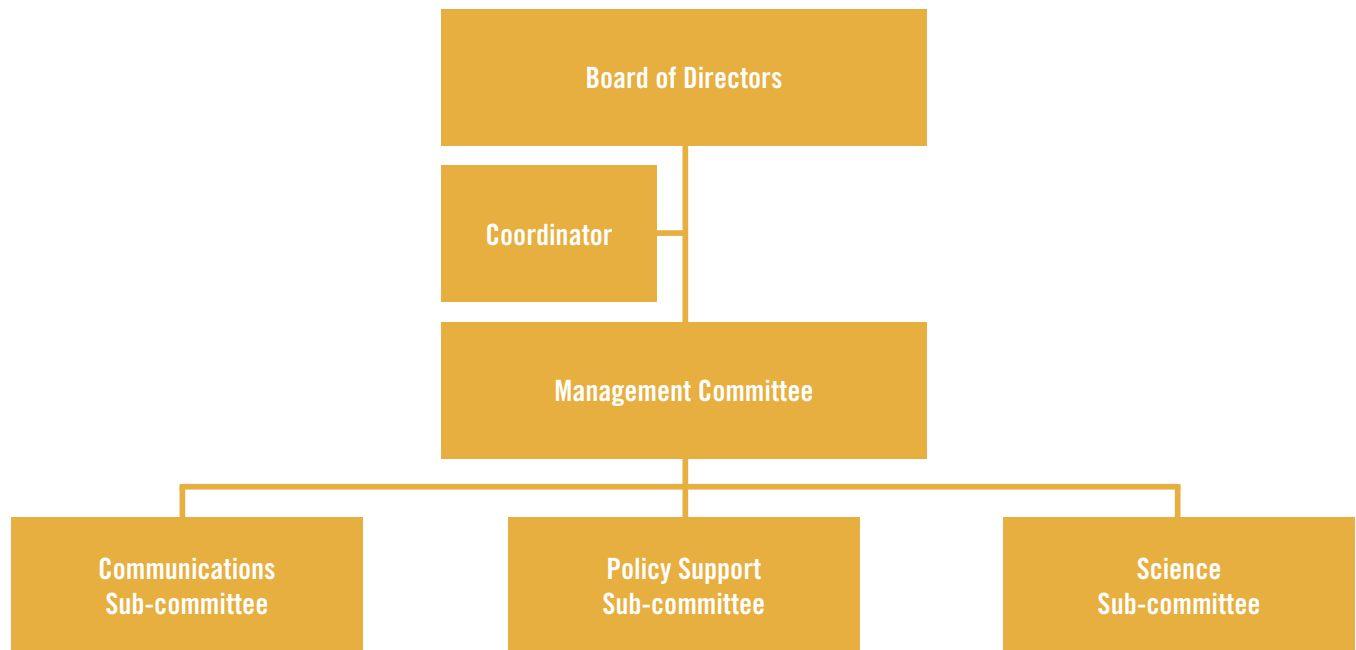
Alberta Sustainable Resource Development: to advance sustainability through healthy public lands and forest ecosystems, and healthy, productive fish and wildlife resources, and implement the Land-use Framework, the provincial land strategy. Other departmental responsibilities include wildfire protection and quasi-judicial processes.

Ducks Unlimited Canada: to achieve a mosaic of natural, restored and managed landscapes capable of perpetually sustaining populations of waterfowl and other wildlife by conserving, restoring and managing wetlands and associated habitats.

Environment Canada: to preserve and enhance the quality of the natural environment, including water, air, soil, flora and fauna, conserve Canada's renewable resources, conserve and protect Canada's water resources, and coordinate environmental policies and programs for the federal government. Environment Canada's mandate also includes forecasting weather and environmental change, and enforcing federal laws relating to boundary waters.

Nature Conservancy of Canada: using the best available conservation science, to protect areas of biological diversity for their intrinsic value and for the benefit of future generations, by securement and long-term stewardship. NCC works with individual landowners, community stakeholders and other conservation organizations and partners to secure lands through outright purchase, land donations and conservation easements to conserve the most ecologically significant natural habitats.

ALBERTA NAWMP PARTNERSHIP STRUCTURE



ALBERTA NAWMP PARTNERSHIP COMMITTEES, 2009-10

BOARD OF DIRECTORS

Ron Bjorge (*Chair*), Alberta Sustainable Resource Development
 Terry Dash, Agriculture and Agri-Food Canada
 Nic DeGama-Blanchet, Nature Conservancy of Canada
 David Ingstrup, Environment Canada
 Dave Kay, Ducks Unlimited Canada
 Len Kryzanowski, Alberta Agriculture and Rural Development
 Bill MacDonald, Alberta Environment

MANAGEMENT COMMITTEE

Michael Barr (*Acting Chair*), Alberta NAWMP Coordinator
 Ron Bennett, Environment Canada
 Eric Butterworth, Ducks Unlimited Canada
 Jason Caswell, Alberta Sustainable Resource Development
 Nic DeGama-Blanchet, Nature Conservancy of Canada
 Dennis Lastuka, Agriculture and Agri-Food Canada
 Tom Slater, Alberta Environment
 Jamie Wuite, Alberta Agriculture and Rural Development

POLICY SUPPORT SUB-COMMITTEE

Per Andersen, Nature Conservancy of Canada
 Ron Bennett, Environment Canada
 Eric Beveridge, Alberta Environment
 Gil Goudreau, Agriculture Financial Services Corporation
 Gerry Haekel (*Chair*), Alberta Sustainable Resource Development
 Terry Kosinski, Alberta Sustainable Resource Development
 Holly Mayer, Agriculture and Agri-Food Canada
 Les Wetter, Ducks Unlimited Canada

SCIENCE SUB-COMMITTEE

Richard Casey, Alberta Environment
 Gordon Court, Alberta Sustainable Resource Development
 Brenda Dale, Environment Canada
 Nic DeGama-Blanchet (*Chair*), Nature Conservancy of Canada
 Jocelyn Hudon, Alberta Culture and Community Spirit
 Glenn Mack, Ducks Unlimited Canada
 Cindy Paszkowski, University of Alberta
 Colleen Phelan, Alberta Agriculture and Rural Development
 Dave Prescott, Alberta Sustainable Resource Development
 Robb Stavne, Alberta Conservation Association
 Mark Wonneck, Agriculture and Agri-Food Canada

COMMUNICATIONS SUB-COMMITTEE

Roger Bryan (*Chair*), Alberta Agriculture and Rural Development
 Genevieve Goggin, Agriculture and Agri-Food Canada
 Anh Hoang, Ducks Unlimited Canada
 Darice Stefanyshyn, Alberta Sustainable Resource Development
 Kara Tersen, Nature Conservancy of Canada
 Krista Tremblett, Alberta Environment
 Suzanne Vuch, Environment Canada

COORDINATOR

Michael Barr, Ducks Unlimited Canada

A Rangeland Legacy

A passion for stewardship has become a lasting legacy with the OH Ranch conservation easements.

With its beginnings in the 1880s, the OH Ranch is one of the oldest working cattle ranches in Alberta. In 1987, Daryl ‘Doc’ Seaman purchased this Longview-area ranch. Then over the next few years, he purchased three other parcels to add to the ranch – one near Bassano, one near Dorothy, and one south of the Longview property.

“Doc was a man with incredible vision and a strong ethic of leaving things better than they were before. He felt it was important to demonstrate that it is possible to maintain a sustainable working landscape while protecting the natural world. He was able to do that to a great extent with the OH, but he recognized that he wouldn’t be around to steward it forever, so he wanted to ensure that would be an enduring legacy for future Albertans and Canadians,” says Dr. Jim Smith of the Mancroft Resource Group, a company that provides appraisal and consulting services related to conservation lands.

Smith worked with Seaman to lay the groundwork for setting up conservation easements on the OH lands. When Seaman passed away in January 2009, his family honoured his values by establishing those easements.

A conservation easement is a voluntary agreement between a landowner and a qualified conservation agency to permanently limit development. The OH easements are with the Nature Conservancy of Canada (NCC), Ducks Unlimited Canada (DUC), and the Southern Alberta Land Trust Society. These donated easements qualified as ‘ecological gifts’ under a federal program that provides tax benefits to donors of ecologically important lands.

The OH easements allow sustainable grazing to continue. “The easements offered a way to preserve the heritage and culture of ranching as an important aspect of who we are, and also conserve our natural heritage, like intact watersheds, airsheds, viewsapes, wildlife habitat and the landscape’s ecological integrity,” explains Smith.

The NCC easement involves the original OH property near Longview. It is one of the largest conservation easements in Canada, conserving 9,444 acres of land bordering Kananaskis Country. This magnificent foothills landscape provides habitat for rare species such as northern pygmy owls, limber pine and bull trout, and for many other species like grizzly bears, grey wolves and moose.

The other OH foothills property is protected through a Southern Alberta Land Trust Society easement. As well, the Alberta Government has designated about 6,670 acres of Crown grazing land leased by the OH in the foothills as a Heritage Rangeland. This designation protects the land from many types of development and recognizes the crucial role of ranching in rangeland conservation.

The DUC easements are on the Dorothy and Bassano properties, in prairie grassland landscapes. Together these easements total over 11,250 acres, making this the largest easement donation in DUC’s history.



Photo courtesy of Bob Lee



Photo courtesy of the Nature Conservancy of Canada (Kara Tersen)

These properties support thriving populations of breeding waterfowl and many other bird, mammal, reptile and amphibian species, and are home to vulnerable wildlife such as Sprague’s pipits and northern pintails. OH Bassano is a 9,388-acre habitat complex with 957 acres of wetlands, 7,587 acres of native uplands, and 803 acres of tame pasture. The property lies in the Wintering Hills, an important NAWMP target area. The beautiful 1,865-acre OH Dorothy easement has over 107 acres of wetlands and 1,745 acres of native prairie uplands.

The OH Ranch easements are a celebration of Doc Seaman’s stewardship vision.



Sharing Data & Expertise for Common Goals

Healthy landscapes, sustainable land management, and balancing of economic, environmental and social needs – Alberta NAWMP has a strong interest in all those areas. And so does the Land Use Secretariat, which is leading the implementation of Alberta’s Land-use Framework (LUF). This common ground has spurred Alberta NAWMP to share its information and expertise with the secretariat to achieve their mutual goals.

The LUF is a comprehensive, balanced, proactive approach to planning and management of private and public lands in Alberta. The framework, which reflects input from three years of consultations with Albertans, was released in December 2008.

One of the LUF’s main strategies is the development of regional land-use plans for Alberta’s seven regions. Alberta NAWMP is supporting the wetland component of those plans by providing datasets, models and technical assistance.

The wetland inventory is one such dataset. “We have worked closely with NAWMP to build key pieces like the wetland inventory for the province. For the first two regional plans – which are the Lower Athabasca plan and the South Saskatchewan plan – NAWMP/ Ducks Unlimited Canada sourced the boreal enhanced wetlands inventory dataset for the Lower Athabasca and the drained wetland inventory dataset for the South Saskatchewan,” says Morris Seiferling, Stewardship Commissioner for the Land Use Secretariat. “Then with our support, Ducks Unlimited Canada completed the wetland data collection for the Upper Athabasca, which both DUC and the Government can use. They are also providing their wetland dataset for the Peace regions when we’re ready to get into that regional planning area.”

To explore other ways to support LUF regional planning, Alberta NAWMP representatives met with the LUF Integration Team of Alberta Sustainable Resource Development (SRD) in 2009-10. They discovered several opportunities related to modelling.

“A lot of the regional planning begins with modelling, and one of the advantages of working with NAWMP is that they have data needed in modelling and their own models,” says Hugh Norris, a member of SRD’s LUF Integration Team. LUF modelling is using software called ALCES, which can model the effects on landscapes of changes, trends or activities over time using different scenarios.

For example, the wetland inventory includes information on drained wetlands, and that information can be used in ALCES to show what landscapes looked like before drainage and link that to factors like biodiversity. As well, Alberta NAWMP has provided datasets of its target landscapes and its wetland project locations, for added information about the conservation value of the identified landscapes to use in modelling scenarios.

Alberta NAWMP is also connecting people involved in the LUF to other people with specialized expertise, like modeller Dave Howerter of Ducks Unlimited Canada. Howerter helped incorporate some aspects of DUC’s Waterfowl Productivity Model into ALCES to generate more accurate estimates of the effects of various land-use scenarios on waterfowl production over time.

Norris adds, “We have also been talking with Alberta NAWMP about options for the implementation stage of the regional plans. One area of interest to us is how to quantify or assess the value of a particular wetland to help guide or evaluate the progress of wetland mitigation efforts.”

Alberta NAWMP Coordinator Michael Barr adds, “The Alberta NAWMP partners intend to help address wetland decision-support needs identified here and in other provincial initiatives as part of its future work.”

Vermilion Watershed at the Leading Edge

In the agricultural landscapes of east-central Alberta, the Vermilion River Watershed Management Project (VRWMP) is a cutting-edge prototype for sub-basin planning under Alberta's *Water for Life*.

"The *Water for Life* strategy is the Alberta Government's framework for managing water resources," explains Rick Friedl of Alberta Environment, the department responsible for the strategy. "*Water for Life* emphasizes stakeholder engagement, informed place-based management, and plans that balance environmental, social and economic needs."

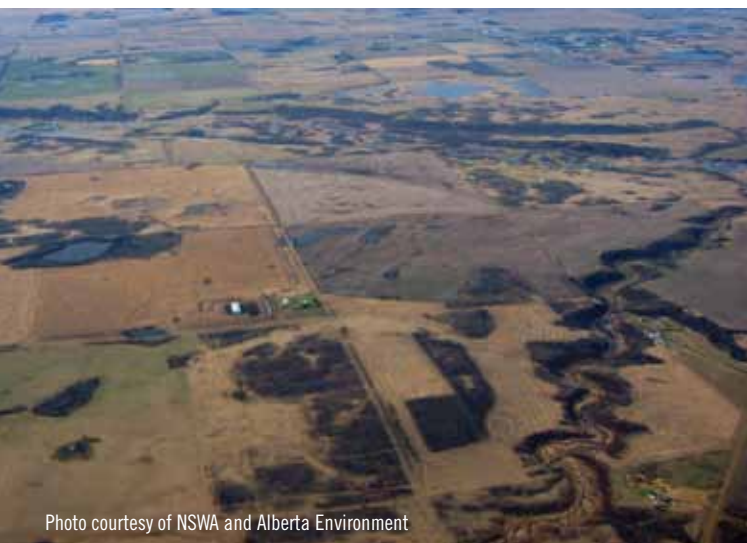


Photo courtesy of NSWA and Alberta Environment

Under the strategy, each of Alberta's major river basins has a multi-stakeholder Watershed Planning and Advisory Council (WPAC) empowered to develop an integrated watershed management plan for the basin. "A watershed is all the area of land that contributes to a water body such as a wetland, lake or river. Everything we do with water or the land has an effect on water – requiring us to work together to solve water issues," explains planner Graham Watt of the North Saskatchewan Watershed Alliance (NSWA), the WPAC for the North Saskatchewan River Basin.

Alberta NAWMP's Michael Barr says, "NSWA and NAWMP were interested in planning at the sub-basin level because they viewed it as the scale at which watershed objectives could become tangible, where implementation could be practical, and where local support and leadership could result. For wetlands, it's an opportunity to identify specific sites to protect and restore as essential parts of achieving a healthy watershed."

The Vermilion watershed, one of 12 sub-basins in the North Saskatchewan basin, was selected as the site for the first sub-basin plan nested within a *Water for Life* basin plan. It was selected because of a "convergence of interest," says Watt. NSWA recognized the Vermilion watershed as highly altered by clearing and wetland drainage. Alberta NAWMP sought to advance wetland protection and restoration through watershed planning. And a coalition of municipalities was already working on local water management issues in the watershed.

The project's innovativeness has opened the door to exciting research opportunities to support its watershed plan – and future plans for other sub-basins. For instance, Dr. John Pomeroy and his research team at the Centre for Hydrology at the University of Saskatchewan have come on board. They had improved the Cold Regions Hydrological Model by adding a wetland module, so the model can measure the cumulative effects of wetland drainage and restoration plus other landscape changes. The researchers are now applying this enhanced model to the sub-basin.

The Prairie Habitat Joint Venture (PHJV) is cooperating with Alberta NAWMP on funding this research. The PHJV worked with Pomeroy in recent years to help shape and promote the model for use as a decision tool, and the Vermilion sub-basin presented a great opportunity for testing it.

"We feel very optimistic about the outlook for the model's application," says Bob MacFarlane, Policy Coordinator for the PHJV's Policy Committee. "We look forward to the results being showcased to watershed planners and managers across western Canada."

The VRWMP's planning phase will be completed in spring 2011. To date, it has assessed key issues and developed goals, and it is now creating recommendations to achieve these goals. Watt adds, "Already local municipalities are looking to this plan to align their agricultural and public works priorities."

"The Vermilion plan is drawing lots of attention," says Barr. "It's blazing a trail for science-based, community-supported watershed plans that deliver real environmental benefits. The recognition that wetland protection and restoration are a central part of the solution has been very rewarding."

Credits for Wetland Carbon: An Update

Development of the wetland carbon protocol – a standardized, scientifically sound system for measuring and verifying carbon storage in Alberta wetlands – is nearing completion. Once the protocol is finalized, Alberta landowners who restore wetlands will be eligible for income through carbon credits traded on Alberta's carbon market. That's great news for Alberta's carbon-hungry wetlands, and potentially for wetlands in other jurisdictions too.

Restoring wetlands to reduce net greenhouse gas emissions is a new and elevated benefit of wetlands. Wetlands are already recognized for the myriad of other benefits they provide, and some benefits, such as buffering the impacts of droughts and floods, will be increasingly important under the more variable weather conditions predicted in most climate change scenarios.

Alberta NAWMP and the Prairie Habitat Joint Venture (PHJV) are funding the protocol's development. To carry out the work, ClimateCHECK has teamed up with the protocol's Technical Working Group, which has members from Ducks Unlimited Canada (DUC), Environment Canada, Alberta Agriculture and Rural Development, the PHJV and Climate Change Central.

The team made significant progress in 2009-10. Technical discussion documents on quantification and implementation of the protocol were completed, and in March 2010, a group of experts discussed those documents at a two-day workshop in Edmonton.

"The workshop brought together technical and policy experts to review and discuss a series of discussion points outlined in those two documents. The participants voted on each point, if they accepted it, if they accepted it but more work was needed, or if they didn't accept it," says DUC's Cynthia Edwards, who is the technical lead of the Working Group. She adds, "It was a very productive workshop, and we had enough support to proceed with the further development of the protocol."

In 2010-11, the team is addressing the points needing more work, and by late summer it will submit the Technical Seed Document to Alberta Environment for review. Then the document will go through an extensive review process, first by technical experts, then stakeholders in Alberta's carbon market, and finally the public.

The team hopes to finalize the protocol by spring 2011. Edwards says, "It is sometimes seemingly a slow process, but there has been good ongoing commitment from Alberta NAWMP as well as the broader NAWMP community to see this move forward."

The protocol is a good example of a growing trend in Alberta toward market-based incentives to encourage environmental stewardship. For instance, in March 2010, the Institute for Agriculture, Forestry and the Environment submitted a report to the Alberta Government on these types of instruments.

The protocol could also be a trendsetter for other jurisdictions. "The governments of Saskatchewan and Manitoba are starting down their path to developing climate change regulations and legislation.

... They are watching the protocol's development with great interest, especially since it is based on research conducted on wetlands across the prairies. Potentially the lessons learned in Alberta and the protocol developed there could be applied in the other two Prairie Provinces," notes Edwards.

"The protocol's immediate benefits will be additional opportunities and resources for wetland restoration, which is essential to the Alberta NAWMP Implementation Plan's success," says Alberta NAWMP Coordinator Michael Barr. "More broadly, it brings significant, positive profile to wetland conservation as part of the climate change strategy."





Linking Wetland Bird Populations and Habitat

Predictive models relating bird populations to habitat are vital tools to guide bird conservation plans and actions. While waterfowl-habitat models are in place, there is no equivalent for the other major bird groups such as waterbirds, shorebirds and migratory landbirds. That's about to change for waterbirds in the Prairie Habitat Joint Venture (PHJV) region through the Prairie and Parkland Marsh Monitoring Project (PPMMP).

The PPMMP began in 2008 as a pilot study and became fully operational in 2009. Its current objectives are:

- ▶ to develop models linking the abundance and occurrence of wetland-associated migratory birds to habitat attributes at the wetland-specific and landscape levels; and
- ▶ to develop a framework for a long-term monitoring program.

"In the broadest sense, the program is working to improve our understanding of the ecology of wetland-associated birds, including waterbirds such as grebes and marsh-dwellers like rails. Having a better ecological understanding of these birds will improve our ability to make informed decisions related to the conservation and management of bird populations," says Dr. Kiel Drake, the PPMMP's Program Manager with Bird Studies Canada.

To provide a solid foundation for model development, the project is collecting much-needed baseline bird data. "Comprehensive knowledge on the status and trends for most wetland-associated bird species is lacking for Alberta and in fact for all of North America," notes Dr. Dave Prescott of Alberta Sustainable Resource Development (SRD). He is a member of the Alberta NAWMP Science Sub-committee, which is contributing funding to the project through Alberta NAWMP's Science Fund.

Data collection is taking place at selected sites, which are piggybacked on a separate, recent project called SpATS (Spatial and Temporal Variation in Nest Success of Prairie Ducks). Bird species are monitored using a standardized North American protocol, which addresses challenges like the elusive habits of some marsh bird species. Some habitat and landscape data are already available from the SpATS database, and other habitat data are being collected at the sites. (Detailed information about PPMMP monitoring procedures is available at www.bsc-eoc.org.)

Drake says, "As of the summer of 2010, we've been to 48 different study sites in the three provinces. We have sampled at 901 stations, 756 wetlands, and all of the dominant ecoregions within the PHJV area." Data collection for this phase of the PPMMP is expected to continue to 2012.

Drake has also started developing the models – possibly many, many models. He explains, "We are seeking to predict species occurrence or abundance by developing models that link birds to habitat characteristics. By relating habitat data collected on-the-ground by PPMMP field crews with habitat data gathered by remote sensing sources, maps predicting waterbird distribution become possible." He hopes to have draft models for the first few species ready by spring of 2011.

With over 30 species of wetland-associated birds, the PHJV delivery area is one of the most important regions in North America for these types of birds, and the PPMMP's modelling results will be of interest to many agencies. Prescott says, "This project directly meets the needs of both SRD and NAWMP. By improving our understanding of the habitat requirements and population status of these birds, we will be better equipped to implement management programs for their conservation."

Contributors to the PPMMP include: Wildlife Habitat Canada; Ducks Unlimited Canada; Institute for Wetland and Waterfowl Research; Bird Studies Canada; Alberta NAWMP Science Fund; Alberta Conservation Association; Saskatchewan Environment; Manitoba Conservation; Environment Canada; TD Friends of the Environment Foundation; and Service Canada.

Committee Reports, 2009-10

BOARD OF DIRECTORS

Members are Director-level or Ministerial-level executives from each partner agency responsible for defining Alberta NAWMP's vision, mission, goals and strategies, and ultimately, for ensuring desired outcomes are achieved. They also identify and facilitate high-level, shared interests between their agency and NAWMP.

In April 2009, the board hosted a very successful breakfast meeting to raise the profile and awareness of NAWMP among about 35 senior staff from the seven partner agencies. The event also provided a forum to discuss and link NAWMP activities to partner initiatives, creating future opportunities for engagement and support. Other actions during 2009-10 included: reviewing a commissioned report which scanned Environmental Services in relation to NAWMP activities, developing NAWMP's future directions in the boreal forest, and linking NAWMP with Alberta's Land-use Framework.

MANAGEMENT COMMITTEE

Members are senior managers capable of integrating operational opportunities between their respective agency and Alberta NAWMP. This committee shares responsibility with the Alberta NAWMP Coordinator for delivering results in annual work plans and the five-year Implementation Plan (2007-12).

In 2009-10 drawing on the five-year Implementation Plan priorities, this committee consolidated current efforts into two major areas – direct program support and policy support – and set forth specific research, communications and other actions for each under its Annual Work Plan. A corresponding budget was then established to ensure actions were properly funded. The result has been a clearer focus by all committees on fewer, more essential projects that better serve the mutual interests of NAWMP and partner agencies. The committee also facilitated actions on the Annual Work Plan's key opportunities: Alberta's Land-use Framework, Alberta's *Water for Life* (Wetland Policy and Watershed Planning), Alberta's Climate Change Strategy, *Growing Forward*, and Environmental Services.

SCIENCE SUB-COMMITTEE

This sub-committee is responsible for identifying, reviewing and recommending research projects that will support planning, implementation and evaluation of Alberta NAWMP activities. Members are science leads within their respective agency.

The Science Sub-committee recommended two projects for funding through Alberta NAWMP's Science Fund in 2009-10:

- ▶ Dr. Kiel Drake, Bird Studies Canada, is conducting a project called *The Prairie and Parkland Marsh Monitoring Project: Developing Decision Support System Models to Benefit Conservation Delivery and Habitat Management for Wetland Associated Birds in Prairie Canada*. Outcomes will include greater understanding of marsh bird distribution in Alberta (and prairie Canada) and enhanced ability to provide and/or capture benefits of NAWMP activities for waterbirds (see *Linking Wetland Bird Populations and Habitat*).

- ▶ Dr. Jonathan Thompson, Ducks Unlimited Canada, is undertaking a waterfowl study in northwestern Alberta entitled *Ecology and Population Affiliations of Barrow's Goldeneye Moulting and Staging in the Peace Parklands of Alberta*. The results will provide improved understanding of this little known diving duck species and increased ability to direct conservation program actions to critical habitat areas.

COMMUNICATIONS SUB-COMMITTEE

The Communications Sub-committee is responsible for supporting Alberta NAWMP information-sharing needs. Members are communication experts within their respective partner agency.

A primary task of this sub-committee in 2009-10 was development of an Outreach Plan. The plan's purpose was to improve awareness, knowledge and engagement among key staff of partner agencies, particularly direct program planners and implementers. The plan identified several components: a new website, promotional products and displays, a Wetland Forum, additional NAWMP breakfast meetings, opportunistic presentations, and an Alberta NAWMP retrospective project. Most components have been completed and are operational (e.g. new website, promotional products) or in progress (e.g. Wetland Forum). The sub-committee also prepared Alberta NAWMP's *Annual Progress Review*.



POLICY SUPPORT SUB-COMMITTEE

The Policy Support Sub-committee is responsible for identifying and seeking synergies on policy priorities and tasks identified in Alberta NAWMP plans. Members are senior policy specialists or analysts within their respective agency.

In 2009-10, this sub-committee's focus was on review, actions, and monitoring of developments related to the most NAWMP-relevant policy opportunities: *Growing Forward*, Environmental Services, Alberta's Land-use Framework, Alberta's *Water for Life*, and Alberta's Climate Change Strategy. Its two main projects were: a multi-partner contract to continue development of an Alberta Wetland Carbon Protocol (see *Credits for Wetland Carbon: An Update*), and a contract with the North Saskatchewan Watershed Alliance to advance development of a Vermilion watershed management plan (see *Vermilion Watershed at the Leading Edge*).

Contributions to NAWMP in Alberta

AGENCY TYPE	AGENCY	2009-10 ^a TOTAL	1986-2010 ^a CUM. TOTAL
Canadian Corporations		\$4,776,758	\$13,362,178
Canadian Education Institutions			\$300,279
Canadian Federal Government	Agriculture and Agri-Food Canada		\$38,996,043
	Canadian federal - unspecified		\$484
	Environment Canada - Canadian Wildlife Service	\$1,536,009	\$31,525,212
	Environment Canada - EcoAction 2000		\$8,276
	Environment Canada - Habitat Stewardship Program	\$(95) ^c	\$3,656,210
	Environment Canada - Natural Areas Conservation Program	\$3,404,621	\$8,786,308
	Fisheries and Oceans Canada		\$3,000
	Human Resources and Social Development Canada		\$18,761
	Millennium Bureau of Canada		\$1,304,100
	Natural Sciences and Engineering Research Council of Canada		\$223,013
	Parks Canada		\$54,660
	Public Works and Government Services Canada		\$500
		\$4,940,535	\$84,576,567
Canadian Not for Profit	Agriculture and Food Council of Alberta		\$275,000
	Alberta Beef Producers		\$954,531
	Alberta Conservation Association	\$50,000	\$4,305,488
	Alberta Conservation Tillage Society		\$125
	Alberta Ecotrust Foundation	\$7,434	\$22,542
	Alberta Environmental Farm Plan Company		\$240
	Alberta Fish and Game Association		\$1,055,705
	Alberta Native Plant Council		\$600
	Alberta Research Council		\$5,000
	Alberta Sport, Recreation, Parks & Wildlife Foundation	\$12,000	\$95,246
	Antelope Creek Habitat Development		\$5,000
	BC Trust for Public Lands		\$100,000
	Canada Trust Friends of the Environment Foundation		\$5,500
	Canadian Circumpolar Institute		\$3,500
	Canadian Nature Federation		\$1,800
	Canadian non-government organizations - unspecified		\$180,264
	Climate Change Central		\$5,000
	Cropmasters		\$46,300
	Ducks Unlimited Canada – U.S. sources		\$63,995
	Ducks Unlimited Canada	\$(1,051,254) ^b	\$5,274,150
	Eastern Irrigation District		\$75,085
	Edmonton Springer Spaniel Club		\$200
	Federation of Alberta Naturalists		\$15,000
	Forest Products Association of Canada		\$747
	George Cedric Metcalf Foundation		\$50,000
	Institute for Wetland and Waterfowl Research		\$5,500
	Izaak Walton Killam Memorial Scholarship		\$2,000
	James L. Baillie Memorial Fund		\$2,000
	Lakeland Industry & Community Association*	\$14,051	\$14,051
	Land Stewardship Centre of Canada		\$18,000
	Nature Canada		\$1,128,000
	Nature Conservancy of Canada	\$8,268	\$4,501,056
	Nature Trust of British Columbia		\$238,024
	Peace Parkland Naturalists		\$600

AGENCY TYPE	AGENCY	2009-10 ^a TOTAL	1986-2010 ^a CUM. TOTAL
	Project Second Life Society		\$6,000
	Richard H. G. Bonnycastle Graduate Fellowship		\$15,000
	Rocky Mountain Elk Foundation - Canada		\$4,500
	Shell Environmental Fund	\$5,190	\$7,756
	South Peace Wilderness Society		\$9,800
	Southern Alberta Land Trust Society		\$613,119
	Sustainable Forest Management Network		\$20,000
	The Calgary Foundation		\$3,943
	The J.W. McConnell Family Foundation		\$6,999
	The Kahanoff Foundation		\$701
	The W. Garfield Weston Foundation		\$1,534
	United Farmers of Alberta		\$18,447
	Western Irrigation District		\$673,433
	Wildlife Habitat Canada	\$205,800	\$3,281,978
	World Wildlife Fund Canada		\$36,000
	Unspecified		\$4,170,577
		\$(748,511)	\$27,320,036
Canadian Provincial & Territorial Governments	Agriculture Financial Services Corporation		\$446,527
	Alberta Agriculture and Rural Development		\$10,570,726
	Alberta Culture and Community Spirit		\$8,000
	Alberta Energy and Utilities Board		\$8,300
	Alberta Environment	\$168,076	\$3,089,544
	Alberta Sustainable Resource Development	\$728,000	\$20,331,251
	Alberta Transportation		\$9,246
	Alberta Treasury		\$530,724
	British Columbia Ministry of Agriculture and Lands		\$22,500
	British Columbia Ministry of Environment		\$26,000
	British Columbia Ministry of Finance and Corporate Relations		\$71,000
	Habitat Conservation Trust Fund		\$178,000
	Manitoba Habitat Heritage Corporation		\$28,317
	Ministry of Sustainable Resource Management		\$39,500
	Saskatchewan Watershed Authority		\$10,000
		\$896,076	\$35,369,635
Canadian Regional & Local Governments	Big Hay Lake Drainage District		\$(34,639) ^c
	Bonnyville (Municipality of)		\$10,000
	Calgary (City of)	\$51,800	\$81,800
	Camrose County		\$10,769
	Carstairs (Town of)*	\$96,000	\$96,000
	Edmonton (City of)	\$101,970	\$104,031
	Grande Prairie (City of)		\$5,970
	Grande Prairie County		\$2,022
	Greenview (Municipal District of)*	\$6,962	\$6,962
	Lakeland (County of)*	\$2,800	\$2,800
	Lamont (County of)		\$2,008
	Manawan Drainage District		\$34,750
	Medicine Hat (City of)		\$7,680
	Minburn County		\$28,797
	Newell County		\$28,750
	Ponoka (County of)*	\$2,310	\$2,310
	Red Deer (County of)		\$1,811
	Rocky View (Municipal District of)	\$36,600	\$330,061
	Special Areas Board		\$325
	St. Albert (City of)*	\$17,820	\$17,820

AGENCY TYPE	AGENCY	2009-10 ^a TOTAL	1986-2010 ^a CUM. TOTAL
	St. Paul County		\$495
	Stettler County		\$1,562
	Strathcona (County of)	\$5,445	\$23,692
	Strathmore (Town of)	\$46,430	\$198,627
	Sturgeon (County of)*	\$15,120	\$15,120
	Sylvan Lake (Town of)		\$30,000
	Wheatland (County of)*	\$3,200	\$3,200
		\$386,457	\$1,012,723
Canadian Other	Canadian – unspecified	\$609,595	\$1,723,211
United States – All Sources	U.S. Fish and Wildlife Service, U.S. state governments (California, Arizona, Colorado, and Nevada), Ducks Unlimited Inc., FRC Alberta Properties Inc., Anonymous Foundation	\$4,767,158	\$222,730,971
International	Conservation International Bahamas		\$59,744
GRAND TOTAL		\$15,628,068	\$386,455,344

*New contributors in 2009-10.

a. Includes data from Alberta Prairie, Parkland and Peace Parkland and the B.C Peace Parkland (Source: NAWMP National Reporting System).

b. The NAWCA grant process allows for U.S. federal contributions subject to U.S.-source matching contributions, with provision for interim funding until matching contributions are realized. The negative contribution indicated by Ducks Unlimited Canada represents a reversal of temporary funding in this fiscal year; however, reconciled from inception to date, all contributors are positive.

c. Due to differences in funding periods for the agencies and governments contributing to NAWMP, not all funds received each fiscal year are spent in that same year. As a result, yearly expenditures may not reconcile with funds contributed to date.



Activity Expenditures and Habitat Accomplishments, 2009-10

AGENCY	ACTIVITY ^a	EXPENDITURES	PERIOD ACRES ^b	ATTRITION ACRES ^b	NET ACRES ^b	CUMULATIVE ACRES ^b
Ducks Unlimited Canada	Communication/Education	\$483,724	0	0	0	0
	Coordination	\$1,522,043	0	w	0	0
	Enhancement	\$1,509,299	6,207	0	6,207	1,028,189
	Evaluation	\$305,991	0	0	0	0
	Management	\$2,519,406	39,080	-2,549	36,531	2,583,502
	Policy Support	\$178,178	0	0	0	0
	Securement	\$5,331,811	30,708	-2,672	28,036	2,775,943
	Stewardship	\$1,066,377	200,000	-325,908	-125,908	265,371
TOTAL EXPENDITURES		\$12,916,829				
Environment Canada – Canadian Wildlife Service	Communication/Education	\$13,332	0	0	0	0
	Coordination	\$10,000	0	0	0	0
	Evaluation	\$262,868	0	0	0	0
	Management	\$8,000	0	0	0	0
TOTAL EXPENDITURES		\$294,200				
Nature Conservancy of Canada	Communication/Education	\$3,334	0	0	0	0
	Coordination	\$25,377	0	0	0	0
	Enhancement	\$491	33	0	33	55,666
	Management	\$189,032	148,159	0	148,159	438,259
	Securement	\$3,566,857	3,433	0	3,433	43,320
	Reconnaissance & Design	\$6,638	0	0	0	0
TOTAL EXPENDITURES		\$3,791,729				
GRAND TOTAL EXPENDITURES		\$17,002,758				
GRAND TOTAL SECURED ACRES			34,141			2,819,263

Notes

This table shows expenditures and habitat activities for the Alberta Prairie, Parkland and Peace Parkland biomes and the B.C. Peace Parkland biome from April 1, 2009 to March 31, 2010 (Source: NAWMP National Reporting System). Due to differences in funding periods for the agencies and governments contributing to NAWMP, not all funds received each fiscal year are spent in that same year. As a result, yearly expenditures may not reconcile with funds contributed to date.

a. Activities:

- ▶ Communication/Education: Communications activities in support of NAWMP partners (primarily Alberta, but also PHJV, national and international NAWMP).
- ▶ Coordination: Partnership coordination and data administration (primarily Alberta, but also PHJV, national and international NAWMP).
- ▶ Enhancement: Activities supporting restoration and/or improvement of secured wetlands and associated uplands (e.g. earthen dam or ditchplug to restore a small wetland, upland conversion from cropland to grass, range improvement).
- ▶ Evaluation: Scientific or other assessment to inform conservation program priorities and actions, and measure conservation outcomes.
- ▶ Management: Maintenance of secured wetlands and associated uplands and their infrastructure.
- ▶ Policy Support: Activities that identify or support development of policies benefiting wetlands (primarily Alberta, but also PHJV, national and international NAWMP).
- ▶ Securement: Activities supporting targeting, negotiating and signing long-term agreements (10 years to perpetuity), easements or purchases on wetland and associated upland habitat.
- ▶ Stewardship: Promotional activities (e.g. agricultural demonstration projects) that lead to adoption of environmentally beneficial and sustainable land-use practices.
- ▶ Reconnaissance & Design: Activities to assess project feasibility and develop project plans.

b. Habitat Acres:

- ▶ Period Acres = habitat acres secured, enhanced or managed between April 1, 2009 and March 31, 2010.
- ▶ Attrition Acres = habitat acres with agreements that expired between April 1, 2009 and March 31, 2010.
- ▶ Net Acres = period acres – attrition acres, between April 1, 2009 and March 31, 2010.
- ▶ Cumulative Acres = cumulative total of habitat acres secured, enhanced or managed since 1986.

Cooperators

1187397 Alberta Ltd.
Access Land Services Ltd.
Access Pipeline Inc.
Acquired Land Management Inc.
Action Energy Inc.
Action Land Consultants (2001) Ltd.
Advance Land Services
Advantage Oil & Gas Ltd.
Agricore United
Agriculture and Agri-Food Canada
Agriculture and Agri-Food Canada - Prairie Farm
Rehabilitation Administration
Agriculture and Food Council of Alberta
Agriculture Financial Services Corporation
Aguila Exploration Consultants Ltd.
Ainsworth Lumber Company Ltd.
Alberta Agriculture and Rural Development
Alberta Association of Municipal Districts and Counties
Alberta Beef Producers
Alberta Conservation Association
Alberta Conservation Tillage Society
Alberta Culture and Community Spirit
Alberta Ecotrust Foundation
Alberta Energy and Utilities Board
Alberta Environment
Alberta Environmental Farm Plan Company
Alberta Fish and Game Association
Alberta Land and Lease Limited
Alberta Municipal Affairs
Alberta Native Plant Council
Alberta Research Council
Alberta Reduced Tillage LINKAGES
Alberta Sport, Recreation, Parks and Wildlife Foundation
Alberta Sustainable Resource Development
Alberta Transportation
Alberta Treasury
Alberta-Pacific Forest Industries Inc.
Alliance Pipeline Limited Partnership
Alta Canada Energy Corporation
Alta Energy Corporation
AltaGas Services Inc.
Amar Developments Ltd.
Anadarko Canada Corporation
Anderson Exploration Ltd.
Anonymous Foundation
Antelope Creek Habitat Development
Antelope Land Services Ltd.
Apache Canada Ltd.
ARC Resources Ltd.
Arctos Land Corporation
Argent Energy Inc.
Arizona (State of)
Arnett & Burgess Oilfield Construction Ltd.
Artek Exploration Ltd.
Artemis Energy
Aspen Endeavour Resources Inc.
ATCO Electric Ltd.
ATCO Gas
ATCO Structures & Logistics Ltd.
Atlas Land Consultants Ltd.
Aurora Land Consulting Ltd.
Avalanche Energy Limited
Avid Oil & Gas Ltd.
B P Canada Energy Company
Barbeejay Supplies Ltd.
BASF Canada Inc.
Bayer CropScience Canada
Baytex Energy Ltd.
B.C. Trust for Public Lands
Beaver County
Beaverbrook Development Inc.
Beaverhill Lake Nature Centre
Ben's Trucking and Landscaping
Big Country Energy Services LP
Big Hay Lake Drainage District
Big Lake Environment Support Society
Bighorn Land & Field Service Ltd.
Birchcliff Energy Ltd.
Bonavista Energy Trust Ltd.
Bonavista Petroleum
Bonnyville (Municipality of)
Bow River Irrigation District
Bowest Consulting Ltd.
Bowood Energy Corp.
Boyd Petro Search
Brigus Resources Ltd.
British Columbia Ministry of Agriculture and Lands
British Columbia Ministry of Environment
British Columbia Ministry of Finance and
Corporate Relations
Britt Resources Ltd.
Buffalo Resources Corp.
Burlington Resources Inc.
Cabre Exploration Ltd.
Cabrerra Resources Limited
Calgary (City of)
California Department of Fish and Game
California (State of)
Cameron Development Corporation
Camrose County
Canada Malting Co. Ltd.
Canada private - unspecified
Canada Trust Friends of the Environment Foundation
Canada West Land Services Ltd.
Canadian Cattlemen's Association
Canadian Circumpolar Institute
Canadian federal - unspecified
Canadian Forest Products
Canadian Landmasters Resource Services Ltd.
Canadian National Railway
Canadian Natural Resources Ltd.
Canadian Nature Federation
Canadian non-government organizations - unspecified
Canadian Pacific Railway
Canadian Superior Energy Inc.
Canadian - unspecified
Canetic Resources Trust
Cannat Resources Inc.
Capitol Energy Resources Ltd.
Cargill Inc.
Caribou Land Services
Carlton 142 Inc.
Carriage Lane Estates Inc.
Carstairs (Town of)
Cavalier Land Ltd.
Celtic Exploration Ltd.
Cenovus Energy Inc.
Central Alberta Rural Electrification Association
Central Global Resources, ULC
Centrica Canada Limited
Challenger Development Corporation
Chamaelo Energy
Choice Resources Corp.
Circle E Grazing Association
Clear Environmental Solutions Inc.
Climate Change Central
Coal Valley Resources Inc.
Coastal Resources Ltd.
Cochin Pipe Lines Ltd.
Colorado (State of)
Commonwealth Construction Company Ltd.
Compara Energy Services Inc.
Complete Exploration Services Ltd.
Complete Land Services Ltd.
Compton Petroleum Corporation
Conoco Phillips Canada
Conservation International Bahamas
Cordero Energy Inc.
Cossack Land Services Ltd.
Cowie Cattle Company Ltd.
Crew Energy Inc.
Crispin Energy Inc.
Cropmasters
CrossAlta Gas Storage & Services Ltd.
Crystal Landing Corporation
Culane Energy Corporation
Cygnet Lake Drainage District
D.J. Old Ltd.
Data Trek Exploration (1986) Ltd.
Daylight Energy Ltd.
Decker Petroleum Ltd.
Desmarais Energy Corporation
Devon Canada Corporation
Dirham Construction Ltd.
Dominion Energy Canada Ltd.
Dow AgroSciences
Dox Investments Inc.
Ducks Unlimited Canada
Ducks Unlimited, Inc.
E-Bay Oilfield Contracting Inc.
Eastern Irrigation District
Echoex Ltd.
Edmonton (City of)
Edmonton Springer Spaniel Club
Edwards Land (Calgary) Ltd.
EnCana Corporation
ENDEV Resources Partnership
EnerMark Inc.
Enterra Energy Corp.
Environment Canada - Canadian Wildlife Service
Environment Canada - EcoAction 2000
Environment Canada - Habitat Stewardship Program
Environment Canada - Natural Areas Conservation
Program
Environmental Law Centre
EOG Resources, Inc.
Equatorial Energy Inc.
Esprit Exploration Ltd.
Evolve Surface Strategies Inc.
Exalta Energy Inc.
ExxonMobil Canada Energy
Fairmount Energy Inc.
Federation of Alberta Naturalists
Feed-Rite Ltd.
First National Properties Group

Fisheries and Oceans Canada
Flagstaff County
Fletcher Challenge Canada Ltd.
Flexi-Coil
Foothills Pipe Lines Ltd.
Forest Products Association of Canada
Fortis Alberta Inc.
FRC Alberta Properties, Inc.
Galfour Development Corporation
Galleon Energy Inc.
Genstar Development Partnership
Gentry Resources Ltd.
Geoid Exploration Ltd.
George Cedric Metcalf Foundation
GeoTir Inc.
Grand Petroleum Inc.
Grande Prairie (City of)
Grande Prairie County
Grandir Resources Ltd.
Gray Diamond Construction
Green Drop Ltd.
Green-Con Lands Ltd.
Greenview (Municipal District of)
Habitat Conservation Trust Fund
Harbinger Exploration Inc.
Harvest Energy
Hasco Development Corporation
Heritage Surface Solutions Ltd.
HMA Land Services Ltd.
Hopewell Development Corporation
Horizon Land Services Ltd.
Horseshoe Land Ltd.
Hughes Oilfield Construction Ltd.
Human Resources and Skills Development Canada
Husky Group of Companies
Husky Oil Operations Ltd.
Impact 2000 Inc.
Imperial Oil Resources Ltd.
Indian and Northern Affairs Canada
Inglewood Bird Sanctuary
Inland Cement Ltd.
Institute for Wetland and Waterfowl Research
Integrated Geophysical Consultants Ltd.
Integrity Land Inc.
Inter Pipeline Fund
International Association of Fish & Wildlife Agencies
Izaak Walton Killam Memorial Scholarship
Jaffer Real Estate Limited Partnership III Inc.
James L. Baillie Memorial Fund
James Richardson International
JED Oil Inc.
Kanover Ltd.
Keyera Energy Facilities Limited
KeyWest Energy Corporation
Krang Energy Inc.
L. Griffin Management Inc.
Lac La Biche Feed Mill & Farm Supply Ltd.
Lacombe County
Lakeland (County of)
Lakeland Industry & Community Association
Lamont (County of)
Lamont Gas Co-op Ltd.
Land Solutions Inc.
Land Stewardship Centre of Canada
Landquest Services Ltd.
Landwest Resource Services Ltd.

Lockhorn Exploration Ltd.
Logistex Land Services Ltd.
Longstaff Land Surveying Ltd.
Lucas Bowker & White
Luscar Ltd.
LXL Consulting Ltd.
Majestic Land Services Ltd.
Mamba Production Partnership
Manawan Drainage District
Mancal Corporation
Manitoba Conservation
Manitoba Habitat Heritage Corporation
Manitok Exploration Inc.
Maverick Land Consultants Inc.
Maxi Services Ltd.
McNally Land Services Ltd.
MEC Operating Company
Medicine Hat (City of)
Melcor Developments Ltd.
MGV Energy Inc.
Millennium Bureau of Canada
Minburn County
Minco Gas Co-op Ltd.
Ministry of Sustainable Resource Management
Monsanto Canada
Montana (State of)
Montane Resources Ltd.
Moose Mountain Buffalo Ranch
Mor-West Ventures Inc.
Mountain Equipment Co-op
MSL Land Services Ltd.
Murphy Oil Company, Ltd.
NAL Oil & Gas Trust
NAL Resources Limited
National Fish and Wildlife Foundation
Natural Sciences and Engineering Research Council of Canada
Nature Canada
Nature Conservancy of Canada
Nature Trust of British Columbia
Navigo Energy Partnership
Newell County
Newport Petroleum Corporation
Nexen Inc.
Nicholson Land Service Ltd.
Niven & Associates Inc.
Norcana Resource Services (1991) Ltd.
Nordic Pressure Services Inc.
North West Upgrading Inc.
Northpoint Development L.P.
Northrock Resources Ltd. (Canada)
NWT Resources, Wildlife and Economic Development
OH Ranch Ltd.
Oil-Expo Investments Ltd.
Olds College
Omera Resources Limited
Oregon (State of)
Outlook Energy Corporation
OutSource Seismic Consultants Inc.
Pan Canadian Petroleum Limited
Pangea Land Ltd.
Paramount Energy Trust
Park Paving Ltd.
Park Ridge Homes Ltd.
Parkland Conservation Farm
Parkland County

Parks Canada
Partners in Habitat Conservation (EID)
PCL Construction Management Inc.
Peace Parkland Native Stewardship Program
Peace Parkland Naturalists
PENGROWTH CORPORATION
Penn West Petroleum Ltd.
Petro Line Upgrade Services Ltd.
Petro-Canada
Petrofund Corporation
Petroland Services Ltd.
Petrolane Consulting Ltd.
PEW Charitable Trusts
Pheasants Forever
Pickseed Canada Inc.
Pioneer Land Services Ltd.
Pioneer Professional Services Group
Ponoka (County of)
Poplar Hill Resources Ltd.
Prairie Land Consultants Inc.
Prairie Land Service Ltd.
Prairie Mines and Royalty Ltd.
Prairie Roadbuilders Limited
Prime Seismic Data
Prime West Energy Inc.
Priority Printing
Progress Energy Ltd.
Progress Land Services Ltd.
Progressive Exploration Services
Project Second Life Society
Prospect Land Services (Alta) Ltd.
Prospect Oil and Gas Management Ltd.
Public Works and Government Services Canada
Ranger Land Services Ltd.
Ravenswood Developments Inc.
RBC Royal Bank
Real Resources Inc.
Red Deer (County of)
Remington Development Corporation
Renton Land Services (1983) Ltd.
Resolution Land Services Ltd.
Richard H. G. Bonnycastle Graduate Fellowship
Richland Petroleum Corporation
Rife Resources Ltd.
Rival Energy Ltd.
Road Runner Land Group Ltd.
Rocky Mountain Elk Foundation - Canada
Rocky View (Municipal District of)
Rockyview Energy Partnership
Rockyview Gas Co-op Ltd.
Roger Hagen Construction Inc.
Rosevear Land Services Ltd.
Roy Northern Land Service Ltd.
Royal Oaks II Joint Venture
Sabretooth Energy Ltd.
Saskatchewan Environment
Saskatchewan Watershed Authority
Saskatchewan Wetland Conservation Corporation
SBW Cattle Company Ltd.
Scott Land and Lease Ltd.
Seamac Land Services Ltd.
Search Energy Corp.
SeCan
Seisland Surveys Ltd.
Shell Canada Products Ltd.
Shell Environmental Fund



Shepard Limited Partnership
Shiningbank Energy Income Fund
Sierra Vista Energy Ltd.
Signalta Resources Limited
Silverado Properties Ltd.
Skana Exploration Ltd.
Slave Lake Pulp Corporation
Soil Conservation Council of Canada
South Peace Wilderness Society
Southern Alberta Land Trust Society
Special Areas Board
Spur Resources Ltd.
St. Albert (City of)
St. Mary River Irrigation District
St. Paul County
Standard Land Company Inc.
Star Oil & Gas
Starboard Gas Ltd.
Stettler County
Strategic Land Services Inc.
Strathcona County
Strathmore (Town of)
Sturgeon (County of)
Suncor Energy Inc.
Sundance Forest Industries Inc.
Sundance Land Services Ltd.
Sunwest Canada Energy Limited
Sustainable Forest Management Network
Sylvan Lake (Town of)
Synergy Land Services Ltd.
Synterra Technologies Ltd.
Takota Land Ltd.
Talisman Energy Inc.
Tasman Exploration Ltd.
TD Canada Trust
Tempest Energy Corporation

Tera Environmental Consultants
Terra-Sine Resources Ltd.
The Calgary Foundation
The J.W. McConnell Family Foundation
The Kahanoff Foundation
The Nature Conservancy
The W. Garfield Weston Foundation
The Woodcock Foundation
Thompson & Associates, Inc.
Thunder Energy Inc.
Tofield (Town of)
Touchdown Land Consultants Ltd.
Tourism for Tofield Foundation
Tournament Exploration Ltd.
TransAlta Corporation
TransCanada Pipelines, Ltd.
Transfeeder Inc.
Traverse Landgroup Ltd.
Trident Exploration Corp.
Trilogy Energy Corp.
TriStar Oil & Gas Ltd.
Triton Energy Corporation
True Energy Inc.
Tudor Corporation Ltd.
Two Hills (County of)
Union Pacific Resources Ltd.
United States Fish and Wildlife Service
United States state governments – unspecified
United States Department of Agriculture Forest Service
United Farmers of Alberta
University of Alberta
University of Calgary
University of Lethbridge
Univex Land Services
Val Vista Energy Ltd.
Venturion Natural Resources Limited

Vermilion Energy Trust
Vermilion Resources
Vermilion River (County of)
Viterra
VSD Developments Corporation
Vulcan County
Wainwright (Municipal District of)
WAM Development Group
Wave Energy Ltd.
Wayco Land Services
Western Feedlots
Western Irrigation District
Westfire Energy Ltd.
Weyerhaeuser
Wheatland (County of)
Wheatland Industrial Park Inc.
Wilburforce Foundation
Wildlife Habitat Canada
World Wildlife Fund Canada
Wyoming (State of)
Yukon Department of Energy, Mines and Resources
Zahmol Properties Ltd.
Zapata Energy Corporation
Zargon Oil & Gas Ltd.
Zargon Energy Trust

For more information about the **Alberta North American Waterfowl Management Plan (NAWMP) Partnership**, contact:

Ducks Unlimited Canada

Attention: Michael Barr
Alberta NAWMP Coordinator
5015 – 49 Street
Camrose, Alberta T4V 1N5
Phone: 780-608-4911
Fax: 780-672-5705
Email: m_barr@ducks.ca

Or visit abnawmp.ca

For more information about Alberta NAWMP activities, contact:

Roger Bryan, Alberta Agriculture and Rural Development (Roger.Bryan@gov.ab.ca)
Cory Habulin, Alberta Environment (Cory.Habulin@gov.ab.ca)
Anh Hoang, Ducks Unlimited Canada (a_hoang@ducks.ca)
Heather Holmen, Agriculture and Agri-Food Canada (heather.holmen@agr.gc.ca)
Darice Stefanyshyn, Alberta Sustainable Resource Development (darice.stefanyshyn@gov.ab.ca)
Kara Tersen, Nature Conservancy of Canada (kara.tersen@natureconservancy.ca)
Suzanne Vuch, Environment Canada (suzanne.vuch@EC.gc.ca)

North American
Wetlands
Conservation Act

Government
of Alberta



Government
of Canada

Gouvernement
du Canada


Ducks Unlimited Canada
Conserving Canada's Wetlands

